



ER

EREGULATIONS

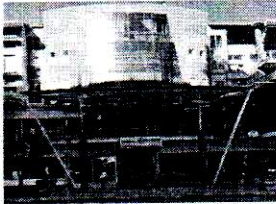
## Starting a business / Company incorporation

### Step 4 Obtain incorporation certificates

You can undertake this step online

*language* Obtain online

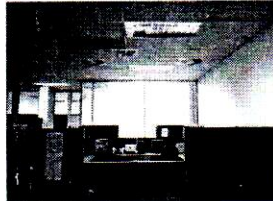
#### Contact details



#### Entity in charge

#### One-Stop Business Facilitation Centre (OBFC)

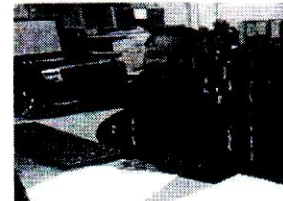
Kingsway Road LNDC Phase II 1st floor, Maseru 100  
Tel: +266 22324667  
Website: [www.obfc.org.ls](http://www.obfc.org.ls)



#### Unit in charge

#### OSS DATA ENTRY

Mon: 08:00 - 12:45, 14:00 - 16:30  
Tue: 08:00 - 12:45, 14:00 - 16:30  
Wed: 08:00 - 12:45, 14:00 - 16:30  
Thu: 08:00 - 12:45, 14:00 - 16:30  
Fri: 08:00 - 12:45, 14:00 - 16:30



#### Person in charge

#### Qentso Khotso

Assistant Processing Officer  
Tel: +266 63000483  
Email: [qentso.khotso@obfc.org.ls](mailto:qentso.khotso@obfc.org.ls)

#### Expected results

0. Company incorporation - Confirmation MAIL
1. Company incorporation - Confirmation LETTER
2. Certificate of incorporation
3. Particulars of the company
4. Company extract

#### Legal justification

1. Companies Act 2011  
Articles 7, schedule-form2 on certificate of incorporation
2. Companies Regulations 2012  
Articles 8, 21, schedule6A on particulars of the company; on signature of the Registrar; on model for particulars of a private company

### Additional information

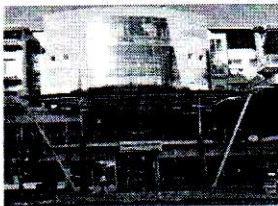
The applicant is informed by mail that the company incorporation has been processed.

He/she receives the certificate of incorporation (with the company name, date of incorporation, registration number, TIN, and validation code) and automated particulars of the company (with articles of association).

All these documents are made available online at <https://www.companies.org.ls/> on the applicant's account. He/she can download from the online account a company extract (that is not sent by mail).

[Companies.org.ls](https://www.companies.org.ls/)

### Recourse: One-Stop Business Facilitation Centre (OBFC)



#### Entity in charge

#### One-Stop Business Facilitation Centre (OBFC)

Kingsway Road LNDC Phase II 1st floor, Maseru 100  
Tel: +266 22324667  
Website: [www.obfc.org.ls](http://www.obfc.org.ls)



#### Unit in charge

#### Deputy Registrar of Companies

Mon: 08:00 - 12:45, 14:00 - 16:30  
Tue: 08:00 - 12:45, 14:00 - 16:30  
Wed: 08:00 - 12:45, 14:00 - 16:30  
Thu: 08:00 - 12:45, 14:00 - 16:30  
Fri: 08:00 - 12:45, 14:00 - 16:30



#### Person in charge

#### Florence Motoa

Deputy Registrar of Companies  
Tel: +266 62105870  
Email: [florence.motoa@obfc.org.ls](mailto:florence.motoa@obfc.org.ls)

	Entity in charge: <i>OBFC</i>	
	Certified by: <i>Monyang Monyang</i>	
	Date/Signature: <i>17/10/18</i>	